

The *RIPPLE*



Expanding the Circle of SC Women of the ELCA

Check out our **website** for up-to-date information and pictures.
Go to <http://www.scwelca.com>.

Published by SC Women of the Evangelical Lutheran Church in America (ELCA)

Fall 2019

"Let all that
you do be
done in love."
1 Corinthians
16:14



SC WELCA 2020 Convention
June 12-13, 2020
St. Philip's Lutheran Church
Newberry, SC

OUR PURPOSE STATEMENT

"As a community of women created in the image of God, called to discipleship in Jesus Christ, and empowered by the Holy Spirit, we commit ourselves to grow in faith, affirm our gifts, support one another in our callings, engage in ministry and action, and promote healing and wholeness in the church, the society, and the world."



PRESIDENT'S REPORT



Fall has officially arrived! The hot, humid days of summer have been replaced by cool, crisp mornings and awesome landscapes of red and gold. Speaking of awesome, I wish I had more awe in my life. I think Jesus wishes I did, too. Whatever happened to awe? Awe follows awareness in life. There will always be a shortage of awe if you are not paying attention. I don't expect to encounter burning bushes in my life, but miracles are happening around me if only I choose to be aware. If I open my eyes and my heart, I will discover what happened to awe. *Taken from Daily Grace.*

Our theme this year, "Just Love," is also the 2020 Triennial Gathering theme although we have a different logo (as instructed by Churchwide WELCA). This year SC Women of the ELCA will open our hands, hearts, and wallets to show love to children who are victims of physical and/or sexual abuse by supporting the SC Network of Children's Advocacy Centers in South Carolina. *"Sometimes God has a Kid's Face."* Sister Mary Rose McGeedy.

All nine of the conferences met this fall. Please see details in this issue about organizations we supported - 9 organizations received a total of \$2,526.00. Grace is at work in our communities! "Truly I tell you, whatever you did for one of the least of these brothers and sisters of mine, you did for me." Matthew 25:40.



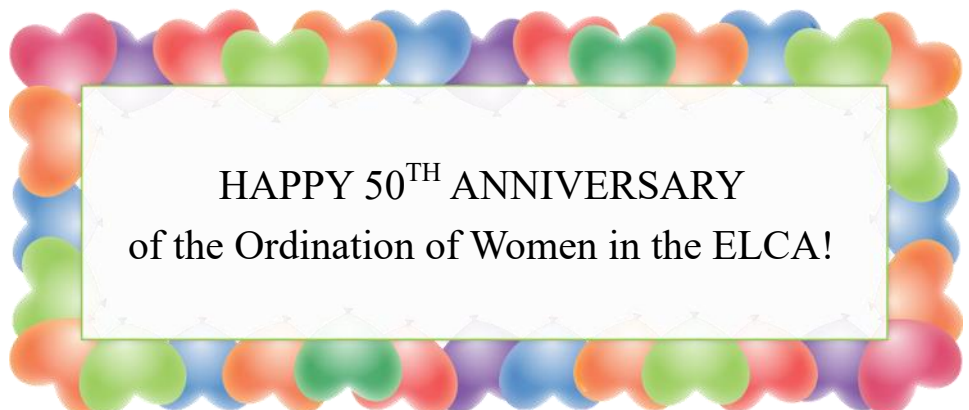
The Board is busy making plans for the Camp Kinard Retreat, the 50th Anniversary celebration, and convention. At convention, we look forward to offering workshops on Friday and Saturday, and we hope you will enjoy this new format.

I encourage congregational units to nominate a Young Woman Guest or a First Timer Guest to attend convention. This is one way we will grow our organization. I also ask that you prayerfully consider running for Board or Treasurer. Serving SC WELCA can be a rewarding and enlightening experience. As we go through our daily activities, let's seek ways to serve our neighbors, and may everything we do, be done in love.

Grateful for Grace,
Becky

INSIDE THIS EDITION

The President's Page	2
Vice President.....	3
Secretary's Report.....	4
Treasurer's Report.....	5
Mission: Community	6
Mission: Action	7
Mission: Growth.....	8
Conference Reports.....	8 & 9
Convention Registration	10
YWG and First-Timers.....	12
Nomination Form	14
Nominations Report	16
Retreat Registrations.....	17
WELCA Triennial	18
Board Members.....	19



HAPPY 50TH ANNIVERSARY
of the Ordination of Women in the ELCA!



VICE PRESIDENT'S REPORT



As your Vice President one of my duties is to Chair our Convention. The Convention will be at St. Philip's Lutheran Church in Newberry, SC on June 12-13, 2020. The theme for the Convention will be "Just Love". Our Bible verse this year is from 1 Corinthians 16:14 *"Let all that you do be done in love."*

The board is excited about the project this year, as we hope you will be too. We are going to be working with SC Network of Children's Advocacy Centers. Details about the items we will be collecting will be available in the Winter *RIPPLE*. The committee has been busy getting our project together. Let's show our love by supporting the projects.

2020 Convention Staff

Chair: Amanda Boatwright	Co-Chairs: Sarah Cheesman and Linda Boatwright
Churchwide Rep: TBA	Registrar: Sherry Sheppard
Asst. Registrar: Kaye Heins	Mission Action Chair: Rae Davis
Keynote Speaker: Thomas Knapp	Parliamentarian: Carolyn Torrence
Photographer: Olivia Fulmer	Song Leader: Sara Coffman
Banquet Entertainment: Becky Starnes	Chaplain: Pastor Kathy Harris
Musician/organist: TBA	Nominating Committee Chair: Jennifer Nuovo
Technology Coordinator: Pat George	Young Women Guest Coordinator: Jessica Walker
First Timer Guest Coordinator: Dianne Pitts	Host Conference Coordinator: (Heartland) Jan Piersol
Host Church Pastor: Pastor Terry Amick	Triennial Gathering Promoter: Risse Snelgrove

At the 2020 SC WELCA Convention at St. Philip's Lutheran Church in Newberry, we will have nine workshops. The registration form for Convention is included in this edition of the *RIPPLE* and is also available on the website. Hotel and workshop information is also included on the registration form. Please submit your registration form by the deadline and make hotel reservations by May 11, 2020 to get the group rate. We are offering nine different workshops on a variety of topics. Please be sure to mark your choices on your registration form.

We will have two workshop sessions on Friday afternoon and one workshop session on Saturday morning. We are making this major change to allow the ladies that only attend on Saturday the opportunity to experience a workshop. All nine workshops will be offered on Friday. If you decide to participate in the "History of the Chrismon", that workshop will be offered as a two-part workshop on Friday. It will take two of the workshops because you will learn the history, why we use the Chrismon and their shapes, and you will make a small Chrismon to take home. On Saturday all the workshops will be available with the exception of "History of the Chrismon" (which will only be offered on Friday). In the Winter *RIPPLE*, I will give details of the workshops and leaders. Just wanted to give you a chance to understand the times of the workshops.

Your sister in Christ,

Amanda Boatwright



REPORT OF THE SECRETARY



Our new Board met for the first time on August 25, 2019 at St. Philip's Lutheran Church in Newberry, SC. All members were present as well as Virginia Herlong, Honorary Life/Memorial Recognition Coordinator, and Pastor Kathy Harris, from Faith Lutheran Chapel in Pickens who provided the opening devotions.

Thank you notes were read from Lighthouse for Life and Lutheran Services Carolinas.

President's Report: President Koch welcomed both old and new Board members.

The Board approved the 2020 Convention theme of "Just Love" based on the Triennial theme along with a convention hymn of Love Divine All Loves Excelling. The scripture is I Corinthians 16:14 "Let all that you do be done in love."

We have contacted Pastor Christi Pursey to lead the Camp Kinard retreat in February.

Becky went to Bogota, Colombia for the 17th National Lutheran Women's meeting. She is in discussion with the Colombian Women's President about a possible service project.

She is looking for women to serve on the Nominating Committee.

A motion was passed to accept the proposed Stewardship Committee of Virginia Herlong, Carolyn Torrence and Karen Lucas.

Vice President's Report: The 2020 Convention will be held at St. Philip's Lutheran Church in Newberry. Amanda reviewed the evaluations from this year's convention as well as the positive and negative comments received.

Committee Reports: Groups will develop goals with anticipated expenses on their own and email them to Becky.

Mission Action: A motion carried to accept proposed project ideas of the Global Cookbook and/or a Bogota, Colombia project when Becky hears back from there; also a local project for the South Carolina Network for Children's Advocacy Centers.

Mission Community: This committee will try to tie into what the other committees are doing.

Mission Growth: Merri Lewis said Pastor Christi Pursey will lead the Camp Kinard retreat in February and she sent her topic suggestions of Spiritual Formation or Soul Collage. We will decide on the topic in November.

New Business:

Becky passed out notebooks to all Board members which include the Constitution, Synodical Leader Guide, and Standing Rules. There are sections to keep Board Minutes, calendars, and the *RIPPLE*.

2020 is the 50th Anniversary of the Ordination of Women.

Further information on this meeting can be found in other reports in this copy of the *RIPPLE*. Minutes will be posted on the website after they are approved at our November meeting.

Respectfully submitted,
Linda Roland

REMINDER: Please send your congregation unit leader/officer updates to either my email or home address which are listed on the Synodical Board Roster found in this issue.



TREASURER'S REPORT



As of September 30, 2019, we have received \$17,456 in Regular Offerings and \$6,808 in Joy Offerings. 65% of our Regular Offerings are sent to churchwide to support the WELCA budget and 100% of our Joy Offerings are sent the ELCA Good Gifts. Our Regular Offerings are about 55% and Joy Offerings are about 68% of the budgeted amounts for the year. If our offerings are equally divided throughout the year, as of September 30th we should be at 67%.

Other receipts include \$400 for life memberships and \$438 interest on the CD to support the LTSS Scholarship, \$273 for *RIPPLE* subscriptions and from our convention, \$10,423 from convention registrations, \$5,237 in convention offering, \$7,182 for our convention project, Lighthouse for Life.

In addition to sending our Regular and Joy Offerings to churchwide, disbursements include convention expenses of \$14,910, donations of \$9,801 to Lighthouse for Life, *RIPPLE* publication expenses of \$1,812 and Board and committee expenses of \$2,076.

May we continue to be able to be a blessing to others.

Rachel Quesada

South Carolina Women of the ELCA Board



Back row—left to right: Amanda Boatwright (Vice President), Rachel Quesada (Treasurer), Linda Roland (Secretary), Denise Warren, Rae Davis

Front row—left to right: Merri Lewis, Amanda Cruse, Kristin Snelgrove, Becky Koch (President), Amanda Sease-Baker, Sarah Cheesman, Risse Snelgrove

COMMUNITY

Community Committee Goals 2019-2020:

The goal of the Community Committee is to enable each woman to value herself and others as disciples created in God's image and redeemed through Jesus Christ; and to build up and celebrate relationships that are global, diverse, and interdependent.

- Provide up to date information to the members of SC WELCA via the SC WELCA Facebook page.
- Promote the use of WELCA and ELCA provided Bible Studies.
- Promote the local and global projects of SC WELCA.
- Encourage the participation of young women in WELCA sponsored events.
- Continue promoting the use of the Congregational Corner to bring the women of SC WELCA closer together.

Your Sisters in Christ,

Kristin Snelgrove (Chair)

Amanda Sease-Baker

Sherry Fowler (*RIPPLE* editor)

Karen Freeman (Facebook editor)

ARK JOURNEY



Seven wonderful ladies and one little lady were blessed to be able to go to the Creation Museum and Ark Museum in Kentucky this past July. We enjoyed seeing the seven days of creation. We were able to experience the creation of life from Adam and Eve. We enjoyed walking the Garden of Eden. We even saw some wonderful dinosaurs. Then the next day we experienced Noah's Ark. We were able to see how Noah, his wife, his sons and their families lived and worked on the ark. We saw all different types

of animals on the ark and how their size is different from today's animals. Every area in the ark was a new adventure and experience to learn how and why God created the world and why the flood happened. We all enjoyed taking pictures by the door of life. It was the door the animals came in on the ark, but today it is used to represent your way to choose God to come into your life and heart. We enjoyed a wonderful time together as sisters in Christ.



ACTION

The Mission Action Committee is looking forward to the 33rd Annual Convention of the SC Women of the ELCA to be held June 12-13, 2020. The Mission of the Action committee is to enable women to articulate and act upon their faith as disciples of Jesus Christ in all areas of life. Our goals for 2019-2020 are:

1. Determine, Promote, and Implement project(s) as recommended by the Action Team and approved by the SC WELCA Board.
2. Develop and distribute appropriate Action team communication tools to support SC WELCA goals and initiatives.
3. Plan and organize all convention related activities in support of Action team project(s) including receipt of, accounting for, distribution of, and reporting of contributions and results.
4. Encourage support of SC WELCA scholarships at Lutheran Theological Southern Seminary (LTSS) through the Honorary Life and Recognition Program.
5. Be a positive example and advocate for SC WELCA and the ELCA Synod Wide Organization to promote a community in Christ and love for one another.

The theme of the 2020 convention is “Just Love” in support of the Triennial theme. We will have the opportunity to actively share our love with children who are victims of abuse and their caregivers in our state through our partnership this year with the South Carolina Network of Children’s Advocacy Centers (SCNAC).



The SCNAC is the accredited state Chapter of the National Children’s Alliance (NCA) in South Carolina which provides coordinated, evidence-based response in all 46 counties including oversight for the 17 Child Advocacy Centers (CACs) across our state. The CACs provide a safe environment for children who are victims of primarily physical and sexual assault. For more information, please visit their website at <https://www.cac-sc.org/>. Soon, you will also find a link to a video about their services on our website at <https://www.scwelca.com/>.

The best way we can provide support through them to help abused children and their families across South Carolina will be through helping build awareness, financial support and/or supplies. A list of supplies that may be donated will be provided in future editions of the *RIPPLE*. Financial donations may be in the form of checks (made out to SC WELCA), general gift cards or gasoline-specific gift cards.

2020 Convention Global Project(s)

As we know, Love has no geographic boundaries. However due to publishing issues with the Women for Women International’s “Share” cookbook, we have had to abandon this project idea for this year’s convention. We will provide details regarding updated plans in future editions of the RIPPLE. The Board will be making a donation to Lutheran Disaster Response to support hurricane victims of Dorian and other possible hurricanes this fall.

Honorary Life and Memorial Recognition Program

Another way to show your Love is to support the Honorary Life and Memorial Recognition Program. You may honor a woman, man or young person in your congregation who is always there when needed. The recipient will receive a certificate and a pin. Memorial recognition may be made in memory of someone who has died and who had a positive impact on you or your church during their lifetime. Proceeds go to the South Carolina Women of the ELCA Scholarship Fund at Lutheran Theological Southern Seminary. An application is on the WELCA website or contact Virginia Herlong, 813 Silver Point Road, Chapin, SC 29036; email: vherlong@sc.rr.com; or phone 803 -932-0155 (home) or 803-206-2493 (cell).

Thank you in advance for your support! See you at convention!

Action committee:

Rae Davis, chairperson

Amanda Cruse

Risse Snelgrove

* denotes non-board members

Amanda Boatwright (Convention Chair)

Jan Piersol (Host Conference Coordinator)*

Virginia Herlong (Honorary/Life Memberships)*

GROWTH

The Mission Growth Committee for 2019-2020 is committed to continue to grow in our faith and in our sisterhood with activities to support the following goals:

- Encourage women to attend retreats at Camp Kinard, the Isle of Palms, and the Wild Women weekend at Lutheridge by providing information and publicizing activities. (See *RIPPLE* for Registration Forms.)
- Promote awareness of the 2020 Triennial Convention in Phoenix, Arizona.
- Provide information that encourages the building of relationships among generations through mentoring.
- Support and promote ELCA church-wide efforts to address natural disasters, and support the SC Network of Children's Advocacy Centers which is the SCWELCA Convention project.

Camp Kinard Retreat Bible Study Topic: "What's Love Got To Do With It?"



The Camp Kinard retreat will be held on February 7-8, 2020. It is a time of fellowship and learning. Pastor Christi Pursey, Spiritual Director and Chaplain at Camp Kinard, will present a Bible study based on 1 Corinthians 13:4-7 in keeping with the 2020 convention theme "Just Love". The retreat begins with dinner at 6 PM Friday and ends after lunch on Saturday. The Isle of Palms retreat will be held on April 24-26, 2020. Look for both registration forms in this issue of the *RIPPLE*. More information on this retreat will be provided later. Thanks to everyone who help with these retreats.

Your Sisters in Christ, Merri Lewis, Sarah Cheesman, Denise Warren, Agnes Folk and Sallie Folk

CONFERENCE REPORTS

Heartland—Sunday, September 8, 2019



The Heartland conference was held at St. Luke's in Prosperity. Sarah Bowers spoke about Thornwell Home and the many services they provide to foster children in SC. Some of these services include education and family support in a nurturing, God filled atmosphere. Heartland collected \$180 with their love offering and donated \$787 to Thornwell Home. They had a total of

60 attendees; 54 unit members, 5 board members and 1 guest.

Amelia—Saturday, September 21, 2019

The Amelia Conference was held at Lord of Life in Bluffton. 49 attendees represented eight units. There were also 4 board members and 2 guests present. Pastor Angela Jennings gave a devotion reminding us that sometimes we don't



need to say anything for God to know what's on our heart. Rev. Dr. H. Frederick Reisz, Jr., Ph. D presented "Mysteries-My Stories," a program that talked about faith and love through the wonderment of magic. An offering of \$506 was donated to the Program for Exceptional People (PEP).

Coastal—Saturday, September 28, 2019

The Coastal Conference was held at Messiah Lutheran in Hannahan. There were five of the 14 units represented after having to reschedule due to hurricane threats. The program was provided by one of

the 27 unit members in attendance, Brenda Kanehl. She spoke about Newborns in Need which provides different services throughout the region with infant clothing and basic necessities. These items will find their way to babies in the hospital who need a quilt to cover their isolette, to the babies of moms who have escaped an environment of domestic violence. The offering of \$117 was donated to Newborns in Need along with 116 different items of clothing brought by the attendees.





CONFERENCE REPORTS

Foothills—Saturday, September 28, 2019

The Foothills conference was held at St. Matthias in Easley. Pastor Maria Miller delivered a devotion on how we can be a seasoning, like a salt to others lives. Rev. Lauren Carlson spoke on Novus Way who are, among other things, the force behind Lutheridge. The offering brought in \$554 and it was decided that \$450 of that would go towards Novus Way scholarships. The conference concluded with lunch, business and door prizes. Ten of the fourteen units were represented with a total of 49 attendees among them. There were also two board members and two guests present, making for a total of 53.



Upstate—Saturday, October 5, 2019

The Upstate conference was held at St. John's in Spartanburg. Two of the three units in the conference were accounted for. There were 7 conference members, 3 board members and 2 guests present making a total of 12 attendees. Pastor Erin provided a devotion on Esther. The program was about Hope Center for Children presented by Penny Wright. An offering of \$94 was received and \$100 was donated to the Hope Center.



Saxe-Gotha—Sunday, September 15, 2019

The Saxe-Gotha conference was held at Faith Lutheran in West Columbia. There are 23 units in this conference and 7 of them were represented. A total of 34 conference members were in attendance, as well as 4 board members and 2 guests. Dallas Shealy provided attendees with a presentation on Lutheran Retreat Centers. The ladies left with a better understanding of what Lutheran Retreat Centers encompass and the services they offer. An offering of \$97.00 was received. Donations of \$100 each went to Disaster Relief Fund and Camp Kinard.



This is a picture of Dallas Shealy with St. Edmund Center. She spoke on Grace and Gratitude.

Epiphany—Saturday, October 19, 2019

St. Luke in Florence hosted the fall conference meeting for Epiphany. St. Luke members Howard and Paula Efirid presented a history of the traditional Chrismon Tree. They described the different symbols that are found on the tree as well as where they should be located. A display of several of the Chrismon ornaments were set out so that attendees could see the detail and beauty of these ornaments up close. An offering of \$166 was collected and donated to Lutheran Services of The Carolinas.



Midlands—Saturday, October 19, 2019

The Midlands conference was held at Living Springs in Columbia. There are 16 units in this conference and 12 were represented on Saturday. There were 17 unit members as well as 2 board members making a total of 19 attendees. Cathy Milejczak presented the program, entitled "Women, You Are Called". She discussed her recent trip to Tanzania and the amazing work being done there, including the installation of a new Bishop. She was also able to update the women on the building of the schools, the hospital and the water program. A total of \$130 was collected in the offering and \$200 was donated to the Lutheran Disaster Response.



Western, Sunday, October 20, 2019

The Western conference was held at Grace in Gilbert. Sabrina Matthews opened the meeting and Deacon Ashlyn Cox led devotions. There were a total of 29 in attendance, including 3 board members; 10 of the 17 units were represented. A total of \$120.01 was collected and will be set aside to sponsor a guest at convention.





SC Women of the ELCA Annual Convention

Theme: "Just Love"

June 12-13, 2020

St. Philip's Lutheran Church, Newberry, SC

REGISTRATION FOR VOTING MEMBERS & VISITORS

____ This is my first SC WELCA Convention ____ I am between the ages of 18-35

Check one:

____ **Voting Member**

____ **Visitor**

Two voting members are allowed from each Congregational Unit.

All visitors are welcome!

Please complete one form per person

NAME _____ CHURCH _____
 ADDRESS _____ CHURCH CITY _____
 CITY, ST, ZIP _____ CONFERENCE _____
 PHONE (home) _____ PHONE (cell) _____
 EMAIL _____

Registration will be confirmed by email. If no email, confirmation will be made by phone.

WORKSHOPS: Most workshops will be held three times – Two Friday afternoon and One Saturday morning. History of Chrismons is only offered Friday afternoon as two workshops together. All others are offered all three times.

I plan to attend the following workshops (required for planning purposes). *Please check no more than three.*

____ History of Chrismons ____ How to do/have a Bible Study ____ Making Cards for Crosses
 ____ Churchwide Rep. Bible Study ____ Healthy Heart Awareness ____ Loving yourself through loss
 ____ Craft/Service Project -Crosses ____ No Sweat Exercise ____ SC Network of Children Advocacy

REGISTRATION:

Voting Member – \$35.00, after May 1, 2020- \$40.00; **Visitor** – \$20.00

\$ _____

(Bulletin of Reports for Voting Member and Visitor included)

\$ _____

MEALS: Friday Lunch - \$10.00; Friday Banquet - \$18.00; Saturday Lunch - \$10.00

\$ _____

TOTAL ENCLOSED

\$ _____

Please circle meals requested. Dietary Restrictions: _____

Voting Member - Please submit registration by May 1, 2020 for convention planning

Visitor - Please submit registration by May 30, 2020 for meal counts

NO refunds after May 1, 2020

Make check payable to SC WELCA

Send this form with check to Convention Registrar:

Sherry Sheppard

128 S. Main St., Ste. 3, Summerville, SC 29483

For questions, contact Sherry at (843) 860-7998 or by email at anthradvntr12@gmail.com

DO NOT USE THIS SPACE

Date Received _____ Check Date _____ Check # _____ Date Deposited _____



DEFINITIONS OF AND FEES DUE FOR VOTING MEMBERS AND VISITORS

Voting Member	Two from each Congregational Unit - Late substitution is allowed. Pay for mileage, meals, lodging and registration. Please submit registration by May 1, 2020 so that convention committees can be selected and the Bulletin of Reports prepared for print.
Visitor (non-voting)	Those attending the convention either not on the agenda or assigned a specific responsibility Pay for mileage, meals, lodging and registration. Please submit registration by May 30, 2020 for meal counts.

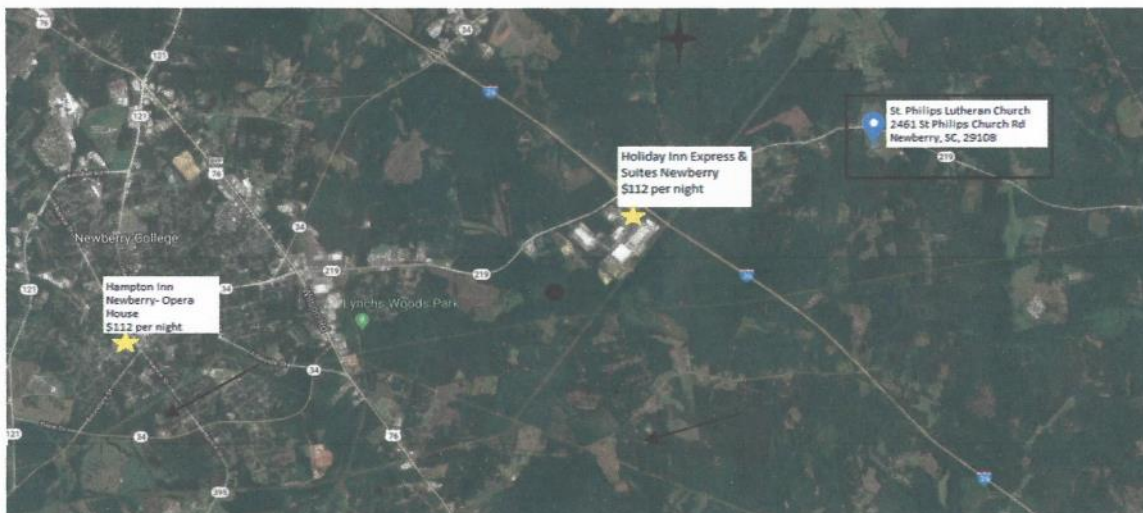
The Nomination Form for Young Woman Guest and First Timer Guest will serve as their registration.

Those on the agenda or assigned a specific responsibility will be contacted and registered by the Convention Chair, Amanda Boatwright. Such a person may also be a Congregational Unit voting member, in which case fees will be adjusted accordingly.

Registrations will officially close 9:00 am Saturday morning of the convention, June 13, 2020. However, please register as early as possible to assist us in convention planning.

LODGING AVAILABLE NEAR ST. PHILIP'S LUTHERAN CHURCH IN NEWBERRY

All have hot breakfast, free Wi-Fi, microwave, refrigerator, TV, 1 king or 2 queen bed(s). Suites include fold-out sofa.



Hampton Inn

Group Code: SCW
\$112 plus tax is a non-discounted rate but personal discounts may be applied; inside rooms, 7 ½ mile from church
1201 Nance Street
Newberry, SC 29108
(803) 276-6666
Must book by **May 11, 2020**

St. Philip's Lutheran Church
2461 St. Philips Church Rd
Newberry, SC 29108

Holiday Inn Express

Group Code: SCW
\$112 plus tax
Inside rooms
2 ½ miles from church
121 Truman Ave
Newberry, SC 29108
(803) 321-3955
Must book by **May 11, 2020**



S.C. Women of the ELCA Annual Convention

Theme: "Just Love"

June 12-13, 2020

St. Philip's Lutheran Church, Newberry, SC

NOMINATION FORM FOR SPONSORSHIP OF:

(Check only one) ☐ **YOUNG WOMAN GUEST** ☐ **FIRST TIMER GUEST**

To be completed by the Congregational Unit President.

Send no more than 2 nominations from your unit to your Conference Coordinator to be received by April 20, 2020.

Nominee Information

Name _____ Age _____
(if Young Woman Guest)

Address _____

Telephone (home) _____ (cell) _____

Email _____

Home Congregation _____

City _____ Conference _____

Please give a brief summary of why this person would be a good choice.

Submitted by (Congregation Unit President) _____

Congregation _____ City _____

Telephone _____ Email _____

Rev. 09/16/19



GUIDELINES FOR NOMINATION OF YOUNG WOMAN GUEST/FIRST TIMER GUEST

Sponsored Young Woman Guest:

Any woman between the ages of 18 and 35 who has never attended a SC Women of the ELCA Convention is eligible for nomination. The Sponsored YWG will have her convention expenses (fee, lodging and meals) paid for by either the Synodical Board or Conference. She will be housed with the other Young Women Guests at the convention. She will be a non-voting member at the convention, will attend the Young Women Guests Orientation, and will be seated with the other Young Women Guests during the convention. It is hoped that the sponsored Young Woman Guest will return as a Voting Member to following years' conventions.

Sponsored First Timer Guest:

Any woman of any age who has never attended a SC Women of the ELCA Convention is eligible for nomination. The Sponsored First Timer Guest will have her convention expenses (fee, lodging and meals) paid for by either the Synodical Board or Conference. She will be a non-voting member at the convention, will attend the First Timers Orientation, and will be seated with the other First Timer Guests during the convention. It is hoped that the sponsored First Timer Guest will return as a Voting Member to following years' conventions.

CONGREGATIONAL UNIT PRESIDENT:

Complete no more than two (2) Nomination Forms and **mail to your CONFERENCE COORDINATOR to be received no later than April 20, 2020**. The order in which nominations are received will be a factor in the selection decision. The Synodical Board will sponsor (pay for) one Young Woman Guest and one First Timer Guest from each conference. The Conference may sponsor additional persons as their funds permit.

CONFERENCE COORDINATOR:

1. Ask for vote at the Fall Conference Meeting how many nominees will be sponsored by your Conference. A sponsorship is approximately \$100.00.
2. After **April 20, 2020**, confer with your Officers and Board Conference Liaison to select the Board-sponsored nominees and, if applicable, the Conference-sponsored nominee(s). Alternate nominees should also be selected in the event the primary nominees are unable to attend the convention. Mark the method of payment on each sponsored nomination form (by Synodical Board or Conference). The Nomination Form will take the place of the Registration Form for the sponsored persons.
3. Notify each of the unit presidents and nominees of decisions made.

Nominee will be (check only one): ☐ Primary Nominee ☐ Alternate Nominee ☐ Not sponsored
Nominee will be sponsored by (check only one): ☐ Synodical Board ☐ Conference

NO LATER THAN April 25, 2020:

4. **Mail all of the completed forms to the Convention Registrar:** Sherry Sheppard, 128 S. Main St., Ste. 3, Summerville SC 29483

NOTE: It is understood that the alternate nominee will be sponsored if the first nominee is unable to attend the convention.

Rev. 09/16/19



South Carolina Women of the ELCA Annual Convention

Theme: "Just Love"

June 12-13, 2020

St. Philip's Lutheran Church, Newberry, SC

NOMINATION FOR ELECTION

*Complete both sides of this form; include a "head shot" photo of nominee and return by March 30, 2020 to:
Jennifer Nuovo, Nominating Committee Chair; 140 Shirway Road, Lexington, SC 29073;
jennscwelca@yahoo.com; 803-622-4714*

Check all that apply:

_____ Board Member

_____ Treasurer

PLEASE PRINT or TYPE

Name _____

Address _____

Phone (home) _____ (cell or work) _____

Email _____

Occupation _____

Age Category _____ 20-29 _____ 30-39 _____ 40-49 _____ 50-59 _____ 60 and over

Ethnic/Racial Heritage _____ Asian _____ African American _____ Hispanic _____ White _____ Other

Primary Language _____

Home Congregation _____ Conference _____

Church Address _____

**Qualifications which would help this person in performing the duties
of the position for which she is being nominated**

Rev 10/6/19



Experiences that would help this person to serve in this position.

Beginning with most recent, list significant experiences, if any, in each area.

Women of the ELCA Congregational Unit (may include experience in previous church bodies)

SC Women of the ELCA, Conference, SWO, Churchwide (may include experience in previous church bodies)

ELCA Congregation, Conference, Synod, and Churchwide (may include experience in previous church bodies)

Ecumenical (include local, state, and national/international organizations/affiliations)

Other comments (Why do you think this person would be effective in this position?)

Submitter Information

Name (print) _____ Signature _____

Address _____

Phone (home) _____ (cell or work) _____

Email _____

Congregational Unit/City _____

Rev 10/6/19



NOMINATING COMMITTEE

Are you ready to make a change? Now is your opportunity to make a change and feel good about your progress! The Nominating Committee is seeking bold women to step forward and allow their names to be put into nomination for positions of treasurer or board members of the SC Women of the ELCA. We need a treasurer who will use her gifts of finance and accuracy to keep up with all the money flow and perform other duties as required of her office. There must be at least 2 nominees for that position. If you are exploring a means to use your gifts and have fun at the same time as well as developing closer relationships with your fellow WELCA sisters, you might prefer to run for state board. We need at least 8 candidates to fill 4 positions. President will be elected by ecclesiastical ballot.

Ok, so you are thinking, “my plate is too full” or “I would never be able to do this role”. Then perhaps you can encourage someone else who you feel would be well suited for the open positions. Requirements for being a nominee are that you be a participant in a congregational unit, a member of the ELCA, and have a willingness to serve at least two-year term. The board meets four times yearly (usually on a Saturday), plus convention. Board members act as liaisons for the conferences and serve on one of the three committees.



I am leaving you with some food for thoughts. Look at our purpose statement and what do you see? Growth, Gifts, Support, and Engage ... serving in one of these positions would be the ideal way to fulfill our purpose. Please give prayerful consideration to serving our state organization by allowing your name to be put

into nomination. From my experience of serving on the board, I can promise there is plenty of help, encouragement, and advice when called for. Friendship that you develop with these ladies becomes family.

The deadline for nomination forms for Treasurer and Board members is **March 30, 2020**. Please feel free to contact the following ladies with any questions, and may God bless you as you make your decision.

Jennifer Nuovo, chair; 803-622-4714 cell or 803-808-3421 jennscwelca@yahoo.com

Betty Jo Amick, abjamick72@att.net (803) 345-5060 Ph; (803) 315-5174 Cell

Margaret Shirer, margaretshirer@aol.com (803) 826-6187 Ph; (803) 308-1044 Cell

Gail Kane, gkane590@aol.com (843)902-7652



CAMP KINARD RETREAT



Camp Kinard Retreat

February 7 & 8, 2020

"What's Love Got To Do With It?"

Name: _____

(Please Print)

Address: _____

Telephone: _____

Email: _____ ++ _____

Home Church: _____

Roommates: _____

Special Dietary needs: _____

Cost: \$75 per person (Overnight with meals)

\$40 per person (daytime only with meals)

Cost includes meals, breaks, lodging with linens and towels, and materials.

Please complete one form per person and mail it by January 4, 2020 with a check for the appropriate amount payable to SC WELCA.

Mail to Rachel Quesada 520 Timber Lane
Anderson, SC 29621

IOP RETREAT



Isle of Palms Retreat

April 24-26, 2020

Name: _____

(Please Print)

Address: _____

Telephone: _____

Email: _____

Home Church: _____

Roommates: _____

(2 to 4 ladies to a room)

Full Retreat: \$130.00 / Day Timers: \$65.00

Amount Enclosed: _____

First time attendee: ___ Yes ___ No

Bed linens are included in the registration fee. Please bring your own towels. Please document any special needs you have (dietary or otherwise) below. If you have a specific need, please bring items to supplement what we serve. Please bring a favorite snack or dessert to share.

Please send this registration with your deposit.

Register Early. Space is limited. Only 10 rooms have 2 double beds. The others have a Queen and a set of bunks. One form per participant. *Please make checks payable to Sallie Folk, 422 West Pine Street, Florence, SC 29501



WOMEN OF THE ELCA GATHERING
JULY 16-19, 2020 | PHOENIX

I read Linda Post-Bushkofsky's article in the Gather Magazine titled **"Caring for our Emotional, Spiritual and Physical Health"**. Linda talked about how for years she didn't take care of her body and allowed herself to keep pushing through life by over committing her time. She admitted that she didn't take time for proper sleep, nutrition and exercise. She finally realized at the age of 60 that her body was in dire need of emotional, spiritual and physical health attention. Linda now values her health and everything that is needed for a balanced life.

Her article really hit home for me. I just turned 63 this year and I realized that even though I retired from a 40 year career and all of my girls are grown women now, I still tend to over commit and fail to care for myself. What the heck am I doing? It just slapped me in the face. I need to make changes in my life if I plan to stay healthy for a long time. I have committed to make changes in my life thanks to Linda's article. The first thing I have decided to do is slow down and not feel guilty for taking time out for myself. I've joined an exercise class, I'm cutting down portion size at meal time and I have joined a neighborhood Bible study. It's a

start right?

How is your emotional, spiritual and physical health? Do you need to stop and make some changes in your life? If so let's start by registering for the **11th WELCA National Gathering** and join me for this amazing event July 16-19 in Phoenix Arizona. I assure you that this event will take care of your emotional and spiritual needs.

Don't put it off! **Registration is now open** at www.welcatg.org. Early bird registration is \$325 until January 7, 2020. After January 6th the registration fee will be \$375. This website will be constantly updated as more information is announced by the churchwide staff. But, for now you can:

- Register for the Gathering
- Access the Gathering logo for download
- Find a Powerpoint template for your use
- Download a promotional flyer for the Gathering
- Shop for Triennial Gathering clothing
- Get hotel information
- Get optional tour information

If you are already registered or planning on registering please email me at snelgroverisse@gmail.com so we can make plans together. There are still several \$200.00 stipends available. These will be available until they run out or by January 31, 2020. The stipend application is on our website and was included in the Summer issue of the *RIPPLE*. Please contact me for details.

Risse Snelgrove, Triennial Gathering Promoter



Attention! All Young Women (YWG)

and Ladies Who Have Never Attended Convention (FTG)

Are you a young woman between the ages of 18 and 35 who has never attended a SC WELCA convention? Are you older than 35 and have never attended convention? Or do you know a woman in your congregation who meets these qualifications?

The Synodical Board will cover expenses for one Young Woman Guest and one First Timer Guest from each Conference to attend convention. Guidelines are included on the YWG/FTG Nomination Form in this issue. Ask your congregational unit President for details! Join us for fellowship, workshops, worship, great food and entertainment.

Congregational Unit Presidents: Please complete the Nomination Form and mail it to your **Conference Coordinator** to be received no later than **April 20, 2020**. Names of Conference Coordinators are listed in last year's Bulletin of Reports on page 48. **Please do not send the form directly to Sherry Sheppard, Registrar. It must go through the Conference Coordinator.**

Now is the time to be thinking about who might represent your congregational unit at convention. Last year we had 2 Young Women Guests and 10 First Timer Guests! We would love to have as many or more Guests this year.





South Carolina Women of the ELCA

Synodical Board 2019-2020

President

Becky Koch (exp 2020)
336 Nautical Way
Greenwood, SC 29649
864-344-1786 cell
beckykoch01@gmail.com

Vice President

Amanda Boatwright (exp 2021)
423 Martin Drive
Leesville, SC 29070
803-317-6170
803-674-6112 cell
msangelwingschurchchick@yahoo.com

Secretary

Linda Roland (exp 2021)
18 Younges Island Drive
Bluffton, SC 29909
304-382-2895 cell
lindajroland@gmail.com

Treasurer

Rachel Quesada (exp 2020)
520 Timber Lane
Anderson, SC 29621
864-226-8546 hm
561-866-3011 cell
arachelq@gmail.com

Board Members

Sarah Cheesman (exp 2021)
122 Spinnaker Pointe
Leesville SC 29070
803-332-6825 hm
803-528-0797 cell
Sarah.cheesman@yahoo.com

Amanda Cruse (exp 2020)
233 Farmington Ct
Lexington, SC 29072
803-917-7625
acruse1858@gmail.com

Rae F. Davis (exp 2020)
812 Willow Cove Road
Chapin, SC 29036
803-360-4968
rdvs297@gmail.com

Merri Lewis (exp 2021)
2029 Cedarbrook Dr.
Columbia, SC 29212
803-732-5429 hm
803-445-9989 cell
lewismerri@yahoo.com

Amanda Marie Sease-Baker
(exp 2020)
124 Rosewood Lane
Lexington, SC 29072
803-520-4323
949-547-4557 cell
manda4ever25@gmail.com

Kristin Snelgrove (exp 2020)
912 Riverwalk Drive
Irmo, SC 29063
803-629-2287
ksnelgrove2005@yahoo.com

Risse Snelgrove (exp.2021)
133 Big Creek Trail
Six Mile SC 29686
803-378-7696
snelgroverisse@gmail.com

Denise Warren (exp. 2021)
940 Glenn St. Unit 101
West Columbia SC 29170
803-257-2153
vdwarren13@gmail.com

Non-Board Positions

SC WELCA Retreats

Sallie Folk & Agnes Folk
422 W. Pine Street
Florence, SC 29501
843-307-1417 (Sallie)
843-662-1210 (Agnes)
aebfolk@yahoo.com
salstitcher823@yahoo.com

Honorary Life/Memorial Recognition Coordinator

Virginia Herlong
813 Silver Point Road
Chapin, SC 29036
803-932-0155 hm
803-206-2493 cell
vherlong@sc.rr.com

RIPPLE Editor/Circ. Mgr.

Sherry Fowler
2931 Glenarden Drive
Charleston, SC 29414
843-442-3593 cell
shf.welca@gmail.com

The RIPPLE

The RIPPLE is published four times per year. It is normally mailed to the churches for distribution to congregational unit presidents and pastors at no charge, as well as to the church-wide office. It is distributed to other subscribers at an annual subscription rate of \$7 annually or **e-mailed for free to anyone.** *The RIPPLE* is published under the Mission: Community Committee of SC Women of the ELCA. Online subscriptions may be sent to Sherry Fowler at shf.welca@gmail.com.

Subscribe to the RIPPLE

Complete the information below and send to
Sherry Fowler, RIPPLE Editor/Circulation Manager
2931 Glenarden Drive, Charleston, SC 29414
along with a check for \$7.00 annually
made payable to SC Women of the ELCA if you'd like to receive a
hard copy via US Mail—OR FREE if e-mailed.
PLEASE PRINT INFORMATION BELOW.

Name _____

Address _____

City/State/Zip _____

Church & City _____

Phone _____

Email _____



South Carolina Women of the ELCA
2931 Glenarden Dr.
Charleston, SC 29414



*Non-Profit Org.
U.S. Postage Paid
Columbia, SC
Permit #241*

Return Service Requested

Expanding the Circle of SC Women of the ELCA

Check out the WELCA.ORG Website for Devotional Resources

Lutheran women have a long history of Bible study, discipleship, and desire to deepen their spiritual life and learn about issues. Women of the ELCA (WELCA.ORG) offers free, downloadable program resources—all in English and many in Spanish—to help you grow in faith and engage in ministry and action.

STAY CONNECTED

There are so many ways that Women of the ELCA can stay connected;

Daily Grace, Gather magazine, Interchange,

Café, Bold Connections

The RIPPLE

All of these publications may be accessed from our SC WELCA website—www.scwelca.com.

Join us on our Facebook group - *SC Women of the ELCA*



SC WELCA 2020 Convention
June 12-13, 2020
St. Philips's Lutheran Church
Newberry, SC

